



KIILTO HYGIENE SOLUTIONS FOR

# WET AREAS

**KiilTO PRO**

**erisan pro**  
*herkälle holle*

Wet areas like washrooms, toilets and saunas, including locker room facilities, require a high standard in hygiene. A careful cleaning with the correct product and method will guarantee a good result.

This guide helps you to succeed in the cleaning of wet areas by introducing correct methods, helping in choosing the correct, ecolabelled cleaning agents and guides on how to use them.



## KIILTO PRO NATURA – A SUSTAINABLE SOLUTION

The focus of the Wet areas -guide is in the environmentally sustainable solutions as well as in the right equipment and machines used in cleaning.

Kiilto Pro Natura -products are made of plant-based, renewable and quickly biodegradable ingredients. This means that they quickly break down into carbon dioxide and water and do not form persistent compounds that would be harmful for the nature. In development of the Natura products the whole life cycle has been considered: raw materials, production, use, disposal, and recycling. You recognize these products from the Natura Plant Based -mark.

High requirements are set not only on environmental friendliness but also on safety and quality. All Natura products eligible for the Nordic Swan Ecolabel certification have received it. The Nordic Swan Ecolabel has strong criteria, but Natura series is a step further: all Natura products are fragrance-free. Most of them also carry the Allergy label of the Finnish Allergy, Skin and Asthma Federation.



# ACHIEVING A GOOD HYGIENE LEVEL IN THE WET AREAS

## HYGIENE IN POOL AREAS AND THE TOILETS IN WET AREAS

Spas and swimming pool areas require a high level of hygiene and the more customers, the more dirt there will be in the facilities. Quality standards have been set for the purity of the pool water which the authorities regularly sample.

If the surfaces are not properly cleaned, the number of microbes quickly increases to a harmful level in the warm, humid environment. Therefore a good planning of the cleaning together with the associated aseptic order of work are really important factors in reaching the demanded level of cleanliness.

The detergents in the Kiilto Pro Wet Areas Concept and the professional cleaning staff guarantee the high level of hygiene required by the facilities.

## ASEPTIC CLEANING

Aseptic cleaning removes dirt and microbes from surfaces and prevents their spread to other surfaces. A good result can only be achieved with properly implemented aseptic cleaning, which includes e.g. good hand hygiene, clean footwear, clean machines and equipment and the use of personal protective clothes when needed.

### The aseptic working order:

1. Remove the possible secretion stains first
2. If the facility has a floor drains, wash them before moving to any other surfaces to prevent dirt from spreading to cleaned surfaces later on
3. Move from the cleanest surfaces into dirtier ones in a systematically without spreading the dirt
4. Work from top to bottom, with the exception of washing vertical surfaces from bottom to top

## GOOD ERGONIMICS

Cleaning includes repetitive movements, reaching and static work. These should be changed into more dynamic when possible, e.g. by washing the walls in an up-and-down motion and keeping the shoulders relaxed and the upper arms close to the body. By using both sides of the body, excessive strain on the stronger side is avoided.

### How to clean with good ergonomics:

1. Use adjustable tools when possible and find support for your hand in situations where you have to reach
2. Use personal protective equipment
3. The use of cleaning machines are more ergonomic way and they also increase both work efficiency and the hygiene level
4. Work tasks that require carrying and lifting should be planned in advance. If possible, these tasks should be done in pairs
5. Take micro-breaks and counter-movements during work to improve endurance in the physically demanding work

## PERSONAL PROTECTION

The cleaning methods and the agents, as well as the work environment containing moisture and temperature fluctuations, require the use of protective equipment to control the risks. Protect yourself with appropriate work clothes.

### Personal protective equipments to ensure safety:

1. Protective gloves, safety spectacles and respirators
2. Protective apron and washable footwear with a good grip
3. When working near pools, wear life jackets and use protection against falling

## Recommended products for locker room areas and toilets:

### -> General areas and toilets



### KIILTO PRO VIENO NON-PERFUMED

All Purpose Cleaner  
41081 / 5 L | 41080 / 1 L  
63360 / 1,5 L bag

For daily cleaning of locker room and toilet areas. All purpose cleaner for all hard surfaces like floors, walls and furniture, for manual and machine methods.

### -> Mirrors, glass surfaces



### KIILTO PRO WINDOW

Cleaner for Glass  
Surfaces  
T7005.005 / 5 L  
T7005.001 / 1 L

Concentrated water-soluble, alcohol-based glass cleaner. Effectively removes dirt, soot and grease from surfaces. Makes glass surfaces clear without leaving a film.

For cleaning and removing stains on glass and mirror surfaces (windows, mirrors, door glass, etc.), metal surfaces, etc. Dries quickly.

### -> General areas and toilets



### KIILTO PRO KOSTI NON-PERFUMED

Wet room cleaner  
41092 / 5 L | 41091 / 1 L

Alkaline cleaner for basic cleaning or daily cleaning of locker rooms and toilets with high utilization rate. Effectively removes grease dirt. Can be used in manual and machine methods.

**Check the suitability for the surface materials.**

## HYGIENE IN LOCKER ROOM AREAS

Locker rooms are spaces that demand high hygiene and where clean and dirty spaces meet. Critical points are e.g. contact surfaces and floors. In these premises, it is usually sufficient to achieve a good level of hygiene with wiping methods and cleaning the floors with a scrubber dryer.

Note that the floors require two-stage cleaning. Loose dirt must be removed from the floors before wet mopping or driving with a scrubber dryer.

### Cleaning steps in the daily cleaning of locker room area:

1. Remove the possible secretion stains first
2. Empty the trash contains and refill the papers
3. Wipe contact surfaces, i.e. doors, door handles, countertops, light switches, etc.
4. Clean the lockers and wipe the seats. Use a furniture mop
5. Mop or sweep with a dryer the loose dirt from the floor
6. Clean the floor with a scrubber dryer, mop the edge areas of the floor

If necessary, remove the dust from the wardrobes, lamps, etc.

## HYGIENE IN TOILETS

Clean and hygienic toilets increase people's comfort. The cleanliness of the toilet facilities has been found to affect the users' assessment of the entire building. The critical points in cleaning the toilets are contact surfaces and material (paper, soap) supplements.

In the cleaning of the toilets, make sure to use products that are specifically developed for toilets. The correct products can effectively remove greasy dirt and prevent limescale deposits from adhering to surfaces.

Use good-quality, microfiber cloths and abrasive tools. If possible, use a scrubber dryer in daily cleaning to improve the cleaning result.

### Cleaning step in the daily cleaning of toilets:

Use protective gloves and work in aseptical order from cleaner surface to dirtier, starting from the light switches and moving on to the furniture.

1. Check and refill paper products and soaps
2. Empty and clean the trash containers
3. Apply adequate amount of the detergent into the handbasin and toilet seat and spread them with a brush
4. Wipe all of the surfaces clean by using a microfibre cloth. Turn the cloth over and use a clean side when moving to the next surface
5. Wash the handbasin and tap with a brush and then rinse thoroughly and dry them. Do the same for the toilet seat and urinal.
6. Clean the floor with mop and put the finishing touches to the facility

Whenever possible, use machine methods for cleaning locker rooms and toilets.

Use a scrubber dryer for daily cleaning and a single disc machine or steam generator for basic cleaning. Choose the pads for the machines according to the surface material.

In manual methods, microfiber cleaning textiles are an essential part of producing good hygiene.

### Recommended products for locker room areas and toilets:

#### -> Descaling



#### KIILTO PRO SANITOP

Descaler for wet rooms

41129 / 5 l | 41128 / 1 l  
63355 / 1,5 l bag

An acid descaler for toilets. For cleaning surfaces which can withstand acidic detergents, such as tiles, sanitary ware and stainless steel. Reduces the formation of deposits and brightens surfaces when used regularly. A gel-like product for vertical surfaces.

**For cleaning surfaces which can withstand acidic detergents.**

#### -> Disinfection



#### KIILTO PRO PLUSCHLOR

Disinfecting Cleaner

41119 / 5 l | 41118 / 1 l

**Use disinfectant only when needed.**

A strongly alkaline disinfectant cleaning agent that contains sodium hypochlorite. For disinfecting cleaning and bleaching of alkaline-resistant surfaces. Removes stains effectively, including grease, bleaches and removes odors.

Also suitable for cleaning of secretion stains.

## Locker rooms



### KIILTO PRO VIENO NON-PERFUMED

41081 / 5 l | 41080 / 1 l • pH 8,5

For daily cleaning of locker room and toilet areas. All purpose cleaner for all hard surfaces.



### KIILTO PRO KOSTI NON-PERFUMED

41092 / 5 l | 41091 / 1 l • pH 10,5

Alkaline cleaner for basic cleaning or daily cleaning of locker rooms and toilets with high utilization rate.



### KIILTO PRO WINDOW

T7005.005 / 5 l • pH 8

Effectively removes dirt from mirrors and glass-surfaces. Dries quickly. Leaves the surfaces shiny and soil-repellent.

## Secretion stain removal & hygienic cleaning of surfaces



### KIILTO PRO PLUSCHLOR

41119 / 5 l | 41118 / 1 l • pH 13

A strongly alkaline disinfectant cleaning agent that contains sodium hypochlorite.

For disinfecting cleaning and bleaching of alkaline-resistant surfaces.

**Use disinfectant only when needed.**



### KIILTO PRO PLUSWHITE

41000 / 5 l • pH 13

A strongly alkaline, chlorine-containing, odourless and highly foaming cleaner.



### KIILTO PRO TEVAN PANOX 200

80556 / 5 l • pH 2

Residue-free, broad-spectrum microbicidal and efficient disinfectant for disinfecting surfaces and body fluid stains.

## Toilets

### Cleaning of surfaces



### KIILTO PRO SANITOP

41128 / 1 l • pH 3

An acid descaler for toilets. For cleaning surfaces which can withstand acidic detergents, such as tiles, sanitary ware and stainless steel.



### KIILTO PRO VIENO NON-PERFUMED

41080 / 1 l • pH 8,5

All purpose cleaner for all hard surfaces like floors, walls and furniture, for manual and machine methods.

### Mirrors



### KIILTO PRO KOSTI NON-PERFUMED

T7431.001 / 1 l • pH 10,5

For daily cleaning of surfaces. Removes effectively organic and synthetic grease and oil dirt. Can be used with the Variomatic flotation device or the Kiiitojet spray cleaning unit.



### KIILTO PRO WINDOW

T7005.001 / 1 l • pH 8

For cleaning and removing stains on glass, mirror and metal surfaces. Effectively removes dirt from mirrors and glass-surfaces. Dries quickly. Leaves the surfaces shiny and soil-repellent.

## Dosing devices



### VARIO MATIC FOAMING UNIT

4062351 / 1 pcs

Whiteline VarioMatic is an ideal foaming device for smaller objects, such as wet rooms in hotels, nursing homes, residential appartements etc.



### WHITELINE KIILTOJET SPRAY CLEANING UNIT

4062249 / 1 pcs

Whiteline KiiitoJet is suitable for locations with a slightly higher usage rate, such as service homes or nursing homes.



### FOAMJET FOAMING UNIT

4062347 / 1 pcs

Mobile main station M001-06 is an independent and compact washing unit for rinsing and foaming. The device is available for 1-2 foamable detergents/cleaners thanks to the ingenious ultranext block.

## Small wetrooms & saunas



**KIILTO PRO KOSTI  
NON-PERFUMED**  
41092 / 5 l • pH 10,5

Alkaline cleaner for daily and basic cleaning of wet areas. Especially suitable for wet areas with the lower utilization rate.



**KIILTO PRO SANITOP**  
41129 / 5 l • pH 4

Acidic, foaming descaler which reduces the formation of deposits and removes deposits. Not for wooden surfaces.

## Cleaning textiles & towels



**KIILTO PRO GREEN  
TEXTILE**

63264 / 5 l | 63265 / 20 l • pH 9,5  
Non-perfumed textile washing powder for coloured and white laundry 30–95 °C.  
For cleaning textiles use half the recommended dosage.



**KIILTO PRO OXY WASH**  
65117 / 1,8 kg • pH 8,5

Washing booster powder for hygienic textile washing. Leaves textiles fresh and hygienic. Excellent in neutralizing odours and for removing stains.

## Pool areas, washrooms & saunas



**KIILTO PRO SOINTU SPA**  
T7082.005 / 5 l • pH 12

Especially for spas, swimming pools and other wet areas with high rate of utilization. Strongly alkaline and foaming.

Effectively removes stubborn grease and oil. For alkaline-resistant surfaces, manual methods, low pressure washing systems and working with a single disc machine.



**KIILTO PRO SANITOP**  
41129 / 5 l • pH 4

An acidic, foaming descaler for wet areas. For cleaning surfaces which can withstand acidic detergents, such as tiles, sanitary ware and stainless steel.

Reduces the formation of deposits and brightens surfaces when used regularly. For manual methods, low pressure washing systems and working with a single disc machine.



**KIILTO PRO KASPERI**  
41000 / 5 l • pH 2,5

A foaming acidic cleaner, effectively dissolves calcium and rust deposits. Combined with good mechanics ensures a good level of cleanliness. Not for wooden surfaces.



**KIILTO PRO PLUSWHITE**  
41000 / 5 l • pH 13

A strongly alkaline, chlorine-containing, odourless and highly foaming cleaner. Use for hygienic cleaning of surfaces if necessary.

## Disinfecting of the tools and machines



**KIILTO PRO KLORILLI**  
8110 / 5 l | 8109 / 1 l • pH 12

A multipurpose liquid disinfectant containing chloramine and surfactant. Effective against bacteria, TB, virus and fungi. Excellent cleaning power.

**Use disinfectant only when needed.**

## Personal hygiene

### Handwash



**ERISAN PRO SOAP**

63002 / 500 ml • 80384 / 1 l dp • 80380 / 5 l

Liquid soap for hands for frequent washing of hands. Contains glycerol. Fragrance-free.

### Hand disinfection



**ERISAN PRO ETASEPT**

63026 / 500 ml • 80738 / 1 l dp • 63086 / 5 l

Effective hand disinfectant, evaporates quickly. For frequent use, leaves a pleasant skin feel.

### Skin care



**ERISAN PRO PROTECT**

8314 / 150 ml • 8315 / 300 ml

Fragrance-free base cream. Protects, cares for and moisturises stressed skin.

## Self-monitoring



**HYGICULT TPC**  
80627 / 10 pcs

Microbiological surface hygiene test to determine total amount of bacteria.

# FOAM WASHING METHOD IN WET ROOMS

In wet facilities, spreading the detergent solution onto the surfaces as foam is easier and more effective when using a low-pressure washer. A good low-pressure washer is easy to use and forms a dry, durable foam.

In the foam washing method, the detergent is spread evenly on the surfaces, guaranteeing that it is allowed to rest on the surfaces for a sufficient amount of time. Please note, however, that a low-pressure washer is no substitute for mechanics! Choosing the right nozzles can influence the amount of water and cleaning agent used.

The daily cleaning method used in wet areas is to wash with alkaline and acidic cleaning agents. It is important to let the cleaning agent work on the surface and use good mechanics. Efficient mechanics can be achieved with abrasive cleaning tools and cleaning machines such as a single-disc machine or a scrubber dryer. It is essential to thoroughly rinse the surfaces and dry them. A steam washing machine can also be used.

**Interim cleaning** is done between daily cleaning times to ensure the functionality of the facilities and the agreed level of cleanliness. Interim cleaning is done with the necessary cleaning methods. The number of intermediate cleaning times during the day depends of the number of visitors.

## Daily cleaning steps to pool areas with foam washing method:

1. Empty trash bins and wash the floor drains
2. Remove loose dirt from the floor by rinsing
3. Wet the outside of pool edges, benches, platforms etc. from bottom to top
4. Apply foam to the surfaces from bottom to top and let it work
5. Wash the floor with a single disc machine or a scrubber dryer using an indirect method
6. Use a scrubbing implement in areas that are not accessible with a machine

7. Remove the washing solution from vertical surfaces using a window dryer and from the floor using a floor squeegee
8. Rinse the vertical surfaces from top to bottom and dry the surfaces
9. Rinse and dry the floor
10. Wash the water line of the pool when required, for example, weekly

If the scrubber dryer is used for intermediate cleanings and those are done often enough, the daily cleaning can be done by using a scrubber dryer without foaming. A sufficient level of hygiene must be ensured with surface cleanliness samples.

## Steps to clean washrooms and toilets with foam washing method:

1. Empty trash bins and remove loose dirt from the floor by rinsing remove loose dirt
2. Wash the floor drains
3. Rinse the vertical surfaces from the bottom up and the furniture
4. Apply the cleaning agent solution from the bottom up and let it effect
5. Wash the surfaces with an abrasive tool from the bottom up
6. Rinse the vertical surfaces from top to bottom and dry the surfaces and try them from top to bottom
7. Spread the cleaning agent solution on the floor
8. Wash the floor with an abrasive tool, in larger spaces use a single disch machine or a scrubber dryer
9. Rinse and dry the floor



# HYGIENE IN SAUNAS

Steam saunas must be washed several times a day, depending on the number of visitors. In daily cleaning surfaces are washed with a disinfecting cleaning agent. Deposits easily accumulate on the surface of the steam room, which can be removed with an acidic cleaning agent.

Infrared saunas must be cleaned according to the manufacturer's instructions. Pay attention to the special requirements of infrared devices. As a cleaning agent, a general cleaning agent is often enough, and the method is wiping and mopping.

## Daily cleaning steps to clean normal saunas:

1. Remove loose dirt from the floor with a floor dryer or by rinsing and wash the floor drain
2. Rinse the wooden boards with warm water and the washable parts of the vertical surfaces, apply the cleaning agent solution
3. Wash the surfaces with an abrasive tool, remove the cleaning agent solution with a dryer
4. Rinse the surfaces with warm water, the last rinse with cold water. Dry the surfaces from top to bottom.
5. Spread the cleaning agent solution on the floor and wash the floor with an abrasive tool, use in larger spaces a single disc machine or a scrubber dryer
6. Rinse and dry the floor

## Recommended products for pool areas, washrooms and saunas:

### -> Daily cleaning



### KIILTO PRO SOINTU SPA

Foaming wet room cleaner  
T7082.005 / 5 l

Effectively removes stubborn grease and oil. Strongly alkaline, foaming.

### -> Descaling



### KIILTO PRO SANITOP

Descaler for wet rooms  
41129 / 5 l | 41128 / 1 l  
63355 / 1,5 l bag

An acidic, foaming descaler for wet areas. Reduces the formation of deposits and brightens surfaces when used regularly.



### KIILTO PRO KASPERI

Foaming descaler  
T7435.005 / 5 l  
T7435.001 / 1 l

A strongly acid, foaming descaler with a good ability to remove dirt and deposits.

### -> Bleaching



### KIILTO PRO PLUSWHITE

Foaming bleaching wet room cleaner  
41000 / 5 l

A strongly alkaline, chlorine-containing, odourless and highly foaming cleaner. Use for hygienic cleaning of surfaces if necessary.

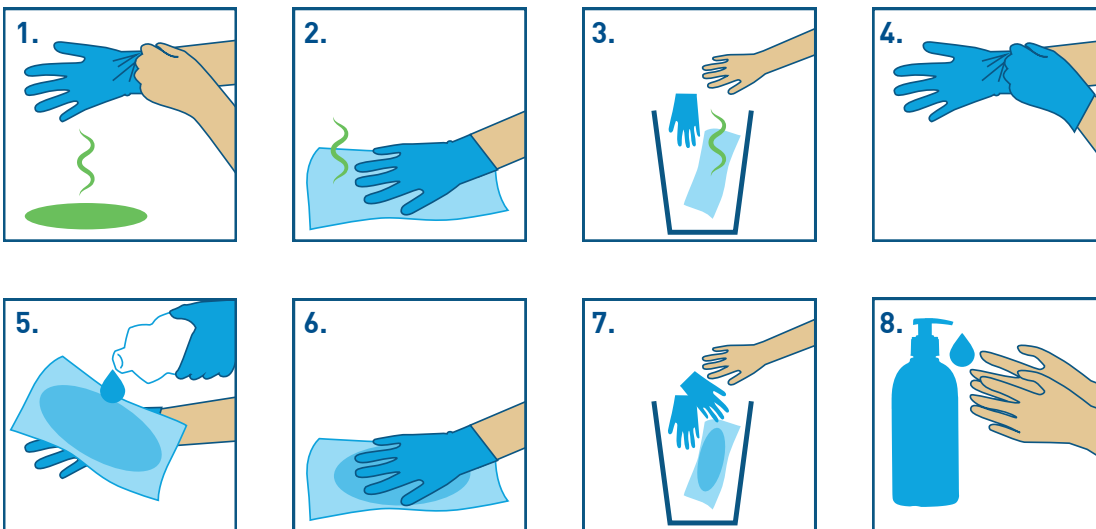
## SECRETION STAINS

The secretion stains are always removed as soon as they are detected since those carry a risk of infection. Remember to use personal protection.

The effective removal of secretion stains increases the good hygiene of wet facilities, improves the customer safety of the facilities and contributes to the fight against infections. Choose the correct method and disinfectant and remember a good hand hygiene.

### Steps in secretion stain removal:

1. Use protective gloves
2. Absorb the stain in a disposable wipe
3. Place the wipe and glove in a waste container
4. Put on a new pair of gloves
5. Moisten a clean wipe with a disinfectant agent
6. Wipe the soiled area clean
7. Place the used wipe and gloves in a waste bag
8. Disinfect your hands



## SECRETION STAIN KIT

The secretory stain kit makes the secretory stain removal easier when everything you need is in one place.

The kit contains instructions, protective gloves / disposable protective gloves, disposable aprons, respiratory protection and the necessary disinfectant agents and cleaning tools, hand sanitizer, garbage bags and disposable towels.

The secretion stain kit facilitates the removal of secretion stains for the entire staff.

## ENSURING THE HYGIENE LEVEL WITH SELF-MONITORING

The purpose of the self-monitoring is to ensure the target-level hygiene of the facilities and the safety of people using the facilities. The self-monitoring helps to reach the best aseptic practices by guiding to choose the appropriate and situation-specific cleaning methods for facilities and different dirt.

The critical points of different spaces must be identified in order to know how to target the sampling correctly. Based on the results of the samples, corrective measures are implemented immediately if necessary. Critical points can be identified and if necessary, corrective actions can be started immediately.

The basis of self-monitoring is perception based on the senses and surface hygiene tests verify the results of the senses. Samplings are collected from clean, dry surface and from the same point, using always the same method. There are different options for self-monitoring, such as Hygicult TPC or luminometry, i.e. so-called ATP meter. Hygicult TPC tells you the total number of bacteria and the ATP meter the amount of dirt.

### Recommended product:



### HYGICULT TPC

Hygiene Test  
80627 / 10 pcs

Microbiological surface hygiene monitoring test for indicating the total number of bacteria. A simple, reliable method for monitoring microbiological cleanliness.

## A CARING, COMPLETE SOLUTION FOR PERSONAL HYGIENE

Clean and well cared hands are the best protection against infections. The fragrance-free, caring and moisturising products are suitable even for the most sensitive skin.



### ERISAN PRO SOAP

Liquid soap

63002 / 500 ml | 80384 / 1 l dp | 80380 / 5 l

For frequent washing of hands. Gentle and efficient, easily rinsable liquid soap. Foams comfortably. Contains glycerol to prevent skin dryness.

Gentle cleanliness without fragrances. Vegan.



### ERISAN PRO ETASEPT

Hand disinfectant

63026 / 500 ml | 80738 / 1 l dp | 63086 / 5 l

Effective, skin caring hand rub destroys unwanted bacteria, mould, yeast and viruses from the skin. Ethanol as the active substance (73,5 weight-%, 80 volume-%) disinfects effectively and evaporates quickly. Contains lot of moisturizing and caring ingredients. Vegan.

EN 1500, EN 13727, EN 13624, EN 14476, EN 12791



### ERISAN PRO PROTECT

Base cream

8314 / 150 ml | 8315 / 300 ml

Panthenol and inositol restore your skin's moisture balance and moisturise and revitalize your skin with long-lasting effect.



**Recommended devices:***-> For large areas***FOAMICO  
M001-06-2C  
ULTRANEXT**Mobile main station  
4062426 / 1 pcs

Mobile main station M001-06 is an independent and compact washing unit for rinsing and foaming. The device is available for 1-2 foamable detergents / cleaners thanks to the ingenious ultranext block.

*-> Smaller wet rooms***VARIOMATIC**Foaming unit  
4062351 / 1 pcs

An ideal foaming device for smaller objects, such as sauna rooms in residential properties.

**WHITELINE  
KIILTOJET**Spray cleaning unit  
4062249 / 1 pcs

Suitable for locations with a slightly higher usage rate, such as service homes or nursing homes.

## LOW-PRESSURE AND FOAMING DEVICES

In wet areas, the application of detergent solution as foam on surfaces is facilitated and enhanced by a low-pressure washing machine. A good low-pressure washing machine is easy to use and it creates dry and permanent foam.

In the foam washing method, the detergent solution is applied evenly to the surfaces, which in turn guarantees a sufficient effect time.

Please note, however, that a low-pressure washer does not replace mechanics!

### FOAMING DEVICES FOR SMALLER WET ROOMS

Foaming devices are suitable for smaller swimming pools, residential properties, serviced homes and hotels, where the utilization rate is lower. They make it easier and faster to spread the detergent and rinse the surfaces.

The foaming device spreads the detergent evenly on the surfaces to be cleaned, which enhances the effect of the agent.

Mechanics should also be remembered when using foaming devices.

## MAINTENANCE CLEANING OF TOOLS AND MACHINES

Only with clean cleaning tools, - machines and - textiles can you get clean. In wet rooms, special attention must be paid to this due to the challenging environment of the rooms. Cleaning tools and textiles must be washable, durable, abrasive and ergonomic, as well as eco-labeled whenever possible.

First of all, the cleaning equipment should be heat disinfected after the work shift. If there is no thermal disinfection machine in the premises, the cleaning equipment is disinfected in a disinfecting solution, Kiilto Pro Klorilli with a dosage of 5000 ppm = 250 ml/ 750 ml of water.

When cleaning wet areas, it is essential to use machine methods to ensure sufficient mechanics. A single disc machines, scrubber dryers of different sizes and steam washing machines are used in the premises. The locker room facilities have their own scrubber dryer and the other facilities have their own machines. To guarantee high hygiene, cleaning machines are not moved anywhere else. Daily maintenance measures include cleaning wheels, suction nozzles and tanks.

## MAINTENANCE CLEANING OF CLEANING TEXTILES

Maintenance of cleaning textiles should be done in a machine wash. Textiles should be prepared for washing by sorting and pre-cleaning them.

Dose half of the amount of textile detergent according to the instructions and fill the mop washer to 2/3 of its capacity. Choose a temperature of 90°C.

Note! With the Kiilto Pro Oxy Wash product, the washing temperature can be lowered and the life-cycle of cleaning textiles can be extended. The product is used together with the main detergent as a washing booster for hygienic textile washing and stain and odor removal.

It is also important to remember the daily cleaning of the mop washing machine.

### Recommended product:

-> *Disinfection*



#### KIILTO PRO Klorilli

Disinfecting Cleaner  
8110 / 5 l | 8109 / 1 l  
pH 12

A multipurpose liquid disinfectant containing chloramine and surfactant. Effective against bacteria, TB, virus and fungi. Excellent cleaning power.

**Use disinfectant only when needed.**

### Recommended products:

-> *Textile wash*



#### KIILTO PRO GREEN TEXTILE

Non-perfumed  
textile washing liquid  
63264 / 5 l | 63265 / 20 l  
pH 9,5

Phosphate- and fragrance free liquid textile washing detergent. Suitable for cleaning textiles such as mops. Contains color protectant.

-> *Washing booster*



#### KIILTO PRO OXY WASH

Washing booster  
powder for hygienic  
textile wash  
65117 / 1,8 kg • pH 8,5

Washing booster powder for hygienic textile washing. Leaves textiles fresh and hygienic. Excellent in neutralizing odours and for removing stains.

# How to choose the right product:



	Kiilto Pro Vieno non-perfumed	Kiilto Pro Window	Kiilto Pro Kosti non-perfumed	Kiilto Pro Sanitop	Kiilto Pro Sointu Spa	Kiilto Pro Kasperri	Kiilto Pro Pluswhite	Kiilto Pro Pluschlor	Kiilto Pro Tevan Panox 200	Kiilto Pro Klorilli	Kiilto Pro Green Textile	Kiilto Pro Oxy Wash	Hygicult TPC	Erisan Pro Soap	Erisan Pro Käsidesi	Erisan Pro Protect
Locker room areas	X	X	X					X								
Toilets (locker rooms)	X	X	X	X				X								
Toilets (wet rooms)		X	X	X	X	X	X	X								
Washrooms			X	X	X	X	X	X								
Saunas			X	X*	X	X*	X	X								
Pool areas			X	X	X	X	X	X								
Secretion stains								X	X	X						
Cleaning textiles											X	X				
Cleaning tool disinfection										X						
Self-monitoring													X			
Hand wash														X		
Hand disinfection															X	
Skin care																X

\*) ceramic tiles

## More info about products

[www.kiilto.com](http://www.kiilto.com)

## Learn more about Kiilto Pro Natura -serie

[kiilto.com/natura](http://kiilto.com/natura)

